

Peerless[®]
Lighting for People[®]



Bruno
LED

Raise the Bar.



Bravo for Bruno

Our most simply designed and broadly befitting luminaire is now available in LED.

As with the original fluorescent models, Bruno LED's pure rectangular form has been inspired by minimalist master Mies van der Rohe and created following his philosophy of *Less is More*.

Less adornment. More advancement.
Less excess. More excellence.

Of course, what Bruno LED wittingly lacks in embellishments on the outside, it more than makes up for with innovative enrichments on the inside. Softshine®-engineered optics. nLight® sensor and controls options. eldoLED® high-efficiency, full-dimming drivers.

Sure, Bruno LED may keep a low profile. But its energy-saving performance and kind-to-the-eyes illumination are sure to elevate lighting projects everywhere to great new heights.

Bruno LED. Raise the Bar.



Be Confident in the Quality

- Peerless 360° Total System Integration with controls, sensors and optics plus LED boards and drivers all manufactured by Acuity Brands
- Single-source, 5-year limited warranty covers all components and construction
- Lighting Facts partner (see spec sheets for labels)
- IES LM-79 tested; CSU/CSA listed; FCC Part 15 certified



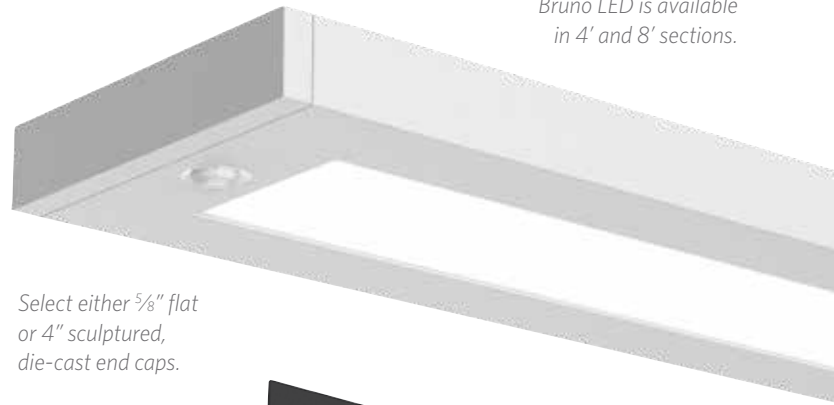
PeerlessLighting.com/Bruno

Energy-Saving Comes Standard

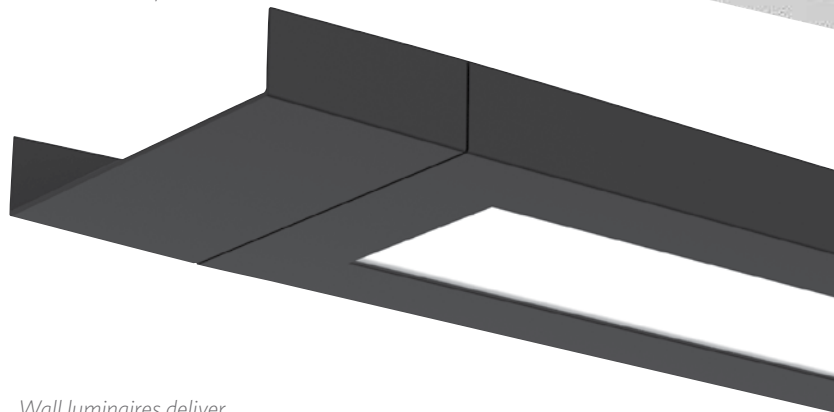
- Bruno LED delivers as high as 116 lumens per watt depending on configuration
- Utilizes less than 1 W/ft² in typical applications meeting ASHRAE open-office requirements and helping projects qualify for LEED points
- Long-lasting LEDs are rated to provide 50,000 hours of illumination to L₈₀ (80% of initial lumen output)

UP TO
116
LM/W

A mere 1 3/4" tall, Bruno LED is available in 4' and 8' sections.



Select either 5/8" flat or 4" sculptured, die-cast end caps.



Wall luminaires deliver asymmetric, ambient lighting.



Choose a white, black or aluminum-colored finish. Or ask about a custom color.

nLight® Options Boost Efficiency Further

- Integrated sensor option provides daylight dimming and/or occupancy detection control
- Embedded nLight module provides for easy "plug-and-play" networking with nLight control systems
- Constant lumen management (N80) extends LED longevity and saves roughly 10% in energy use over luminaire's lifetime



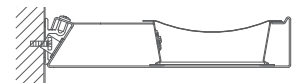
Dim to Black with No Flicker

- 0-10V eldoLED® driver provides full architectural dimming to black without flickering

eldoLED®



Bruno LED BRM9L

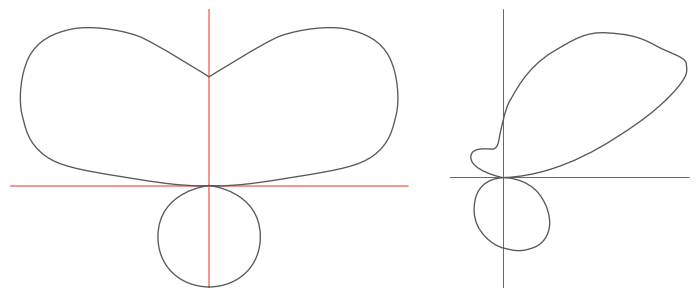


Bruno LED Wall BRW9L

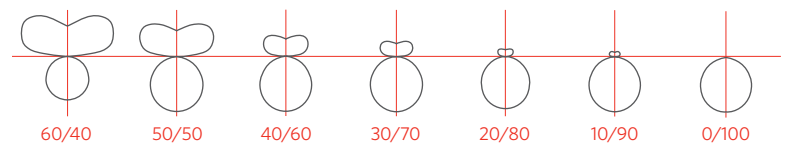
Outstanding Optics Deliver Ideal Illumination

- High-performance lens, film and reflectors control and diffuse light following our proprietary Softshine® optical engineering standards
- Comfortable, uniform and glare-free illumination promotes visual well-being and helps keep eyes thriving
- Warm to Cool — Choose from 3000K, 3500K or 4000K CCT
- 80+ CRI

soft
shine®



Bruno LED is most high performing and efficient when specified at 70% indirect/30% direct



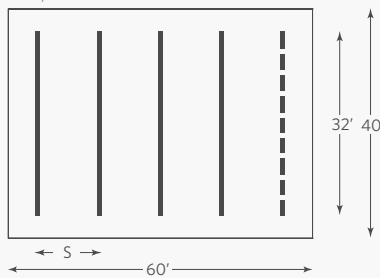


Bruno LED Shines in Action

Use fewer luminaires per installation, meet industry standards, exceed building code requirements and, most importantly, save energy.



Suspended Rows:



	input watts	spacing (S)	ceiling height	overall suspension	number of 32' rows	average illuminance 2.5' work plane	ceiling uniformity (max:min)	power density (w/sf)
Low Output-3400L 70 Up/30 Down	30	12'	9'	18"	5	33fc	5.4:1	0.50
High Output-4800L 70 Up/30 Down	43	14'	12'	36"	4	34fc	2.2:1	0.57
IES Recommended Practice-1							30 fc	10:1

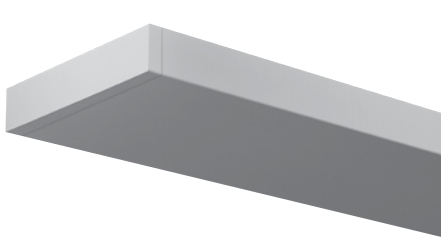
Calculation Notes:

- 80/50/20 ceiling/walls/floor reflectance
- 3500K
- .67 LLF (light loss factor) includes:
 - .80 LLD (lamp lumen depreciation)*
 - .95 LDD (luminaire dirt depreciation)
 - .98 RSD (room surface dirt depreciation)
 - 1.0 BF (ballast factor)

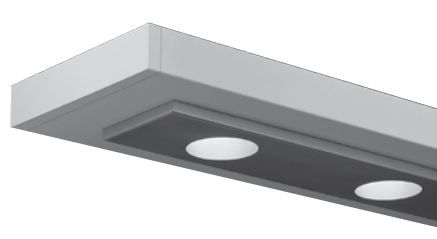
*LLD is based on N80 which maintains LEDs at 80% of maximum lumen output over their lifetime.

Bruno is Brilliant in Fluorescent, Too

The original T5, T5HO and T8 luminaires. Wall companions available.



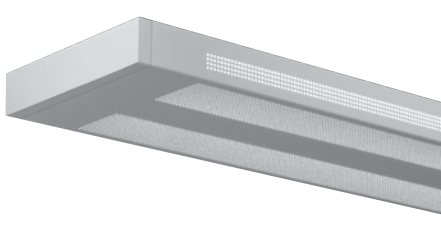
BRM1 Solid Indirect



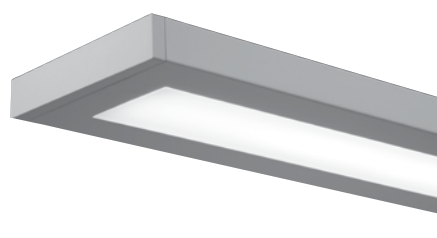
BRM3 Holes Indirect



BRM4 Louver I/D or Direct



BRM7 Partial Perforation Indirect



BRM9 Softshine I/D or Direct



2246 5th Street | Berkeley, CA 94710 | 510.845.2760 | PeerlessLighting.com
 © 2013 Acuity Brands Lighting, Inc. All rights reserved. "Peerless" is a registered trademark.
 Products in this brochure may be covered by one or more U.S. Patents and Patents Pending.

