



Peerless®

Mino LED





[mee-noh]

Shift Perceptions.

Change the way you look at direct ambient lighting. More importantly, change the way office workers and executives, students and teachers, merchants and shoppers experience the light under which they spend their days.

Introducing Peerless Mino, a suite of distinctive LED luminaires — Recessed, Surface and Pendant.

Producing incomparable general-area illumination, Peerless Mino delivers the finest in modern design, energy efficiency, optical quality, advanced engineering, controls compatibility and more.

Inspired in part by the geometric paintings of Mino Argento and his contemporaries, Peerless Mino embodies the same dynamic interplay of positive and negative space found in the works of these late 20th-century artists.

As Peerless Mino is viewed from different angles within a space, subtle geometric abstractions on the perimeter surface of the lens shift in appearance adding a dramatic touch of sophistication.

Direct ambient lighting never looked so good. Or performed so well. Shift perceptions and see the light.

Watch Video and Learn More at
PeerlessLighting.com/Mino



2x2 - RECESSED



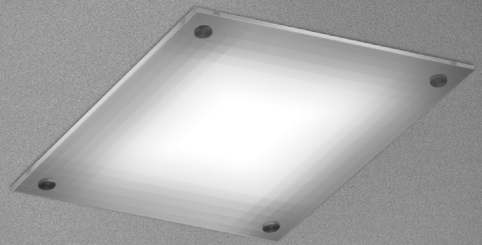
2x2 - SURFACE/WALL



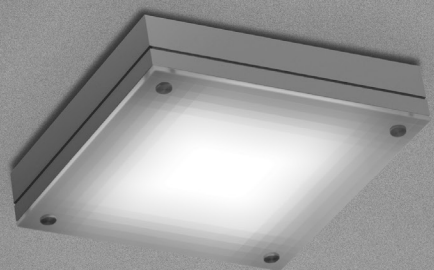
2x2 - PENDANT



1x4 - RECESSED



1x1 - RECESSED



1x1 - SURFACE/WALL



1x1 - PENDANT

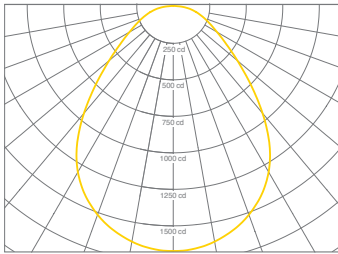




Comfortable Illumination

Peerless Mino's Advanced Optics:

- Adhere to our Softshine® optical engineering standards to emit soft, uniform and glare-free light that minimizes eyestrain and fatigue.
- Feature a high-transmission lens with microstructures that control and diffuse the light.

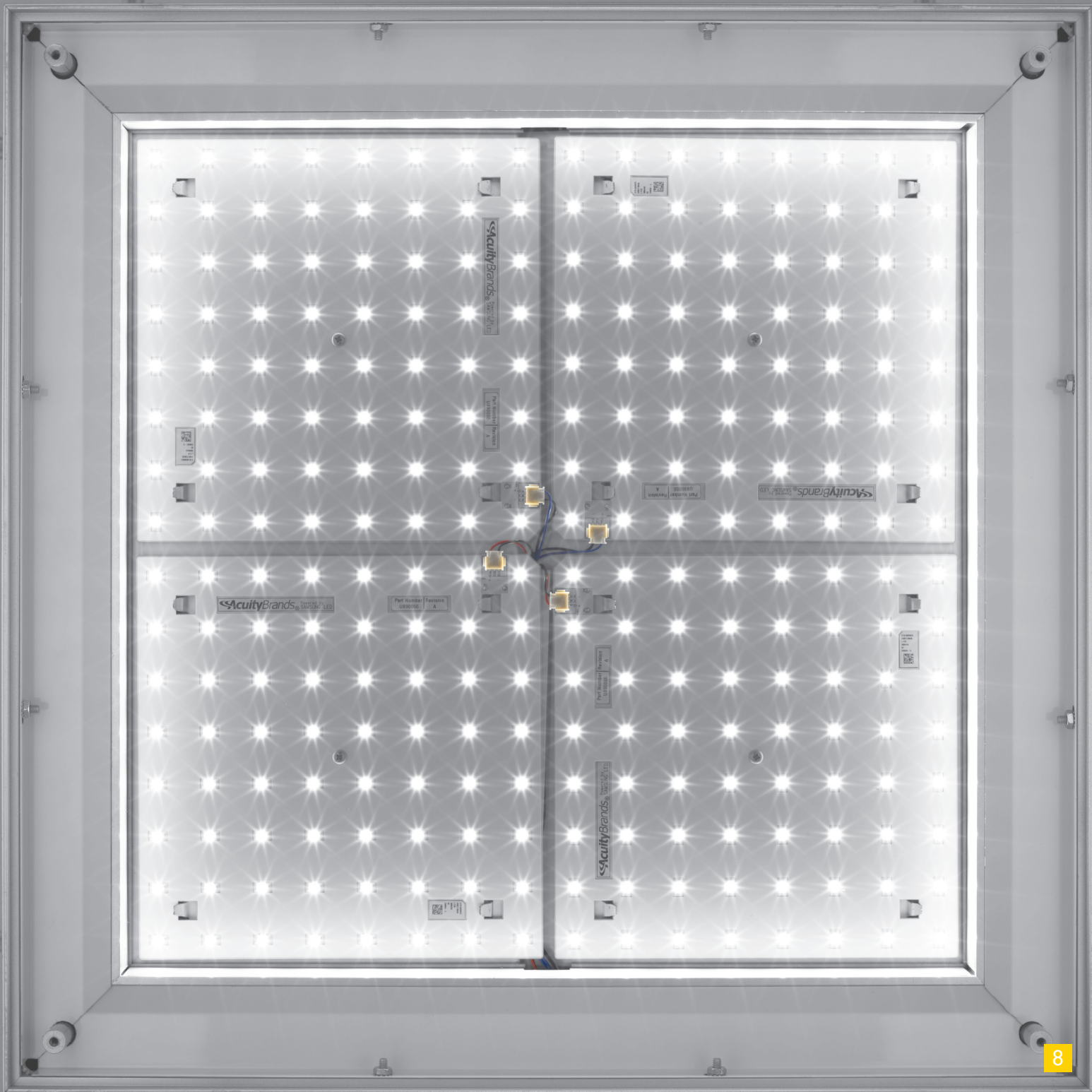


Known for delivering the finest quality “Lighting for People” in the form of ultra-comfortable, glare-reducing indirect luminaires, Peerless now brings this same commitment to visual well-being to the direct ambient category with Peerless Mino.

Designed to be kind to the eyes, Peerless Mino features an acrylic lens with a high-performance optical film that diffuses and evenly distributes soft, uniform light while simultaneously minimizing glare.

The result is a truly human-friendly luminaire, one that emits uniform light, promotes productivity and enlivens all who work, play, study and meet under its appealing gleam.

soft
shine®



Peerless Mino's LED Platform:

- Delivers L₈₀ performance for 50,000 hours at 25°C
- Emits as high as 4056 lumens per luminaire depending on model size and color package.
- Is specifiable in one of three color temperature options: 3000K, 3500K or 4000K
- Measures greater than 80 on the Color Rendering Index (CRI)
- Provides dimming down to 5% with a Class 2, 0-10V dimming driver
- Upgrades easily on-site

Now that LED lighting is a practical choice for use in interior architectural environments, Peerless is proud to offer Peerless Mino with this state-of-the-art illumination source.

Featuring an innovative LED light engine developed by Acuity Brands, Peerless Mino has been meticulously engineered to deliver industry-leading L₈₀ performance for 12 to 15 years of normal use.

By utilizing only LED diodes within a narrow color range and by populating the LED modules using a precise, mathematical algorithm, Peerless Mino achieves uniform color consistency within 2.5 MacAdam ellipses, a range falling well-under ANSI/NEMA standards.

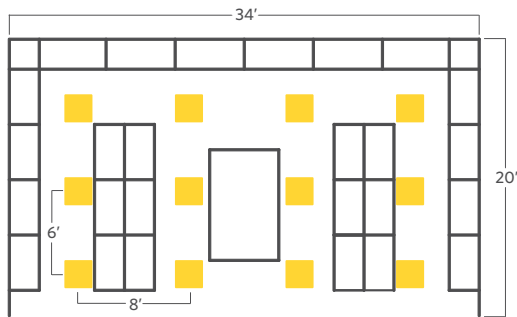
26 fc avg.
2.9:1 max./min.
Divider Shelves
1'-7" AFF

21 fc avg.
2.3:1 max./min.
Wall Shelves
1'-7" AFF

52 fc avg.
1.1:1 max./min.
High Surface
3 1/2' AFF

Efficient Operation

Peerless Mino is Powerful:



Calculation Notes:

80/50/20 ceiling/walls/floor reflectance

.71 LLF (light loss factor) includes:

.80 LLD (lamp lumen depreciation)*

.90 LDD (luminaire dirt depreciation)

.98 RSDD (room surface dirt depreciation)

3500K LED, 3888 lumens, 37.5 input watts

*LLD is based on N80 which maintains LEDs at 80% of maximum lumen output over their lifetime.

UP TO
108
LM/W

Peerless Mino helps shift electricity costs downward. In the design library shown to the left, for example, the 2'x2' 3500K Peerless Mino luminaires produce 104 lumens per watt and generate 52 foot candles on a high 3 1/2' work surface while using only .70 watts per square foot.

Peerless Mino may also contribute toward a building's LEED certification by helping

to reduce overall energy consumption below what is required by code. Moreover, as a mercury-free luminaire that maximizes component life, minimizes energy use and is packaged with 100% recycled materials, Peerless Mino not only reduces operating costs, it moderates environmental impact.

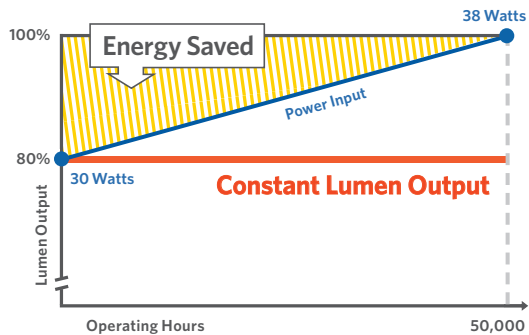
DESIGNLIGHTS
CONSORTIUM

DesignLights™ Consortium Qualified Luminaire



nLight Integration

Peerless Mino with nLight is Smart:



nLight digital lumen management technology intelligently maintains light output at 80% of initial lumen output and prevents energy waste commonly caused by over-lighting.

Peerless Mino can be ordered as an nLight™-enabled fixture to provide network connectivity, digital lumen management or both.

In recessed units, an optional, built-in nLight module allows for easy Cat-5 “plug-and-play” connectivity with nLight control and sensor systems. For surface and pendant models, a standalone nLight module can be ordered from Acuity Brands Controls to install above ceilings or inside walls.

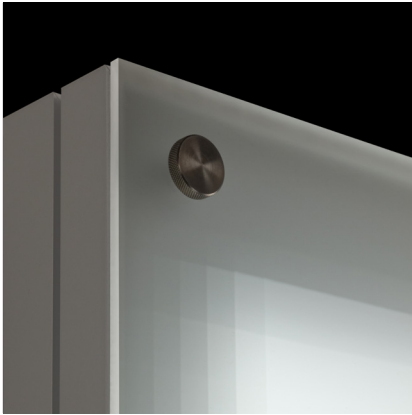


All Peerless Mino models can be specified with digital lumen management to achieve an additional energy savings of roughly 10% over the luminaire’s lifetime.



Multiform Variation

Peerless Mino is Refined:



Peerless Mino features an aluminum housing with mitered corners and a $\frac{1}{4}$ " optical lens that is attached with stylish, round thumbscrews.

Recessed

The 1'x1', 2'x2' and 1'x4' recessed models install seamlessly into grid ceilings and, with an adaptor, are also well-suited for use in hard-surface ceilings and walls. The lens extends $\frac{1}{4}$ " below the ceiling plane showcasing an illuminated edge.

Surface/Wall

Designed for installation onto hard-surface ceilings or walls, the 1'x1' and 2'x2' surface/wall models showcase a stylishly refined extruded aluminum body and are ADA-compliant extending only $3\frac{1}{2}$ " from the surface plane.

Pendant

Suspendible from all ceiling types, the 1'x1' and 2'x2' pendant models feature several refined details including a finished top surface free of visible hardware, a square white canopy and a slender cylindrical stem.





Product Details

Peerless Mino is a Snap:



Peerless Mino surface/wall models feature a specially engineered housing connector suspension pan that allows a single individual to wire and install the luminaires with ease.

Construction/Dimensions

Extruded aluminum with mitered corners forms luminaire housing. **2x2:** 23"x23". **1x1:** 13 7/8"x13 7/8". **1x4:** 11"x47".

Source

Three LED color temperature options — 3000K, 3500K or 4000K — all within 2.5 MacAdam ellipses.

Lens

1/4" high-performance Softshine® lens fastened with thumb screws.

Finish

Recessed: white paint. **Pendant & Surface/Wall:** painted aluminum. Custom colors available.

Mounting

Recessed: Installs into most T-grid and screw slot grid ceilings. Fits hard-surface ceilings and walls with adaptor. **Surface/Wall:** Painted steel mounting pan attaches to housing for secure installation. **Pendant:** Square white canopy free of visible hardware and cylindrical stem.

Packaging

100% recycled box, cardboard inserts and kraft tape. Biodegradable, protective luminaire bag.

Electrical

LED light engine consists of modular LED boards and 0-10V dimming driver (to 5%) rated for 50,000 hours (L80) at 25°C ambient temperature. Specify MVOLT for 120V-277V or 347V with transformer. Pre-wired with 16 AWG fixture wire.

Controls

Recessed Only: nLight-embedded control options facilitate "plug-and-play" networking with nLight controls and sensor systems via Cat-5 cable.

Lumen Management

Digital lumen management available as an option. May be selected with or without the nLight controls option.

Validation

CSA/CUS listed. FCC part 15 certified. LM-79 tested. Lighting Facts partner. DesignLights Consortium qualified luminaire.

Warranty

Five-year limited warranty includes luminaire construction, LED light engine, driver and optional nLight control device in recessed models. Terms and conditions apply.



Peerless[®]
Lighting for People[®]

2246 5th Street
Berkeley, CA 94710
510.845.2760

PeerlessLighting.com

Acuity*Brands*

© 2013 Acuity Brands Lighting, Inc. All rights reserved.
"Peerless" is a registered trademark. Products herein may be
covered by one or more U.S. Patents and Patents Pending.

